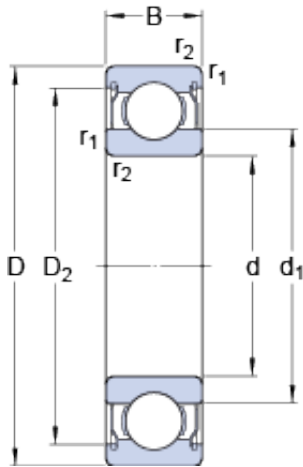




BEARING CORP.OF AMERICA



20 mm x 27 mm x 4 mm SKF W 61704-2ZS
deep groove ball bearings

Bearing No. W 61704-2ZS

W 61704-2ZS Bearing 2D drawings and 3D CAD models

Size	27x20x4 mm
Bore Diameter	27 mm
Outer Diameter	20 mm
Width	4 mm
d	20 mm
D	27 mm
B	4 mm
d ₁	22.36 mm
D ₂	25.3 mm
r _{1,2} - min.	0.2 mm
d _a - min.	21.5 mm
d _a - max.	22 mm
D _a - max.	26 mm
r _a - max.	0.2 mm
Basic dynamic load rating - C	0.585 kN
Basic static load rating - C ₀	0.39 kN
Fatigue load limit - P _u	0.017 kN
Reference speed	50000 r/min
Limiting speed	26000 r/min
Calculation factor - k _r	0.015
Calculation factor - f ₀	8.7
d ₁	22.36 mm
D ₂	25.3 mm
r _{1,2} min.	0.2 mm



BEARING CORP.OF AMERICA

d_a min.	21.5 mm
d_a max.	22 mm
D_a max.	26 mm
r_a max.	0.2 mm
Basic dynamic load rating C	0.585 kN
Basic static load rating C_0	0.39 kN
Fatigue load limit P_u	0.017 kN
Calculation factor k_r	0.015
Calculation factor f_0	8.7
Mass bearing	0.0056 kg