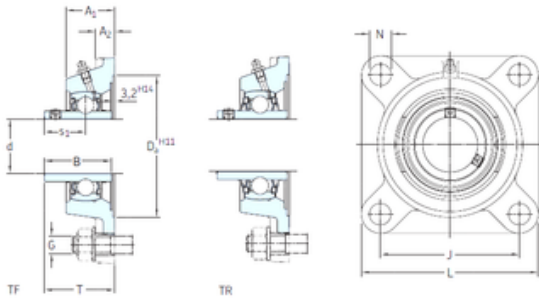




# BEARING CORP.OF AMERICA

## SKF FY 1.3/16 FM bearing units

Bearing No. FY 1.3/16 FM



FY 1.3/16 FM Bearing 2D drawings and 3D CAD models

Bore Diameter	30,163 mm
d	30,163 mm
s1	26,7 mm
A1	32,5 mm
B1	35,7 mm
G	10 mm
J	82,5 mm
L	108 mm
T	46,7 mm
A2	13 mm
Weight	1,1 Kg
Basic dynamic load rating (C)	19,5 kN
Basic static load rating (C0)	11,2 kN
Fatigue load limit (Pu)	0,475
Category	Flange Block Bearings
Inventory	0.0
Manufacturer Name	SKF
Minimum Buy Quantity	N/A
Weight / Kilogram	1.2
Product Group	M06110
Number of Mounting Holes	4
Mounting Method	Eccentric Collar
Housing Style	4 Bolt Square Flange Block
Rolling Element	Ball Bearing
Housing Material	Cast Iron
Expansion / Non-expansion	Non-expansion



## BEARING CORP.OF AMERICA

Mounting Bolts	7/16 Inch
Relubricatable	Yes
Insert Part Number	YET 206-103
Seals	M Seal
Housing Configuration	1 Piece Solid
Pilot Configuration	No Pilot
Inch - Metric	Inch
Long Description	4 Bolt Square Flange Block; 1-3/16" Bore; 4.7" Bolt Circle; 3-1/4" Bolt Spacing; 1 Piece Solid; Eccentric Collar Mount; Cast Iron; Ball Bearing; 1-13/32" Length Thru Bore; Relubric
Other Features	Single Row   Standard Duty   Narrow Inner Race   Open End   Y Bearing
Category	Flange Block
UNSPSC	31171501
Harmonized Tariff Code	8483.20.40.40
Noun	Bearing
Keyword String	Flanged
Manufacturer URL	<a href="http://www.skf.com">http://www.skf.com</a>
Manufacturer Item Number	FY 1.3/16 FM
Weight / LBS	2.65
Length Thru Bore	1.406 Inch   35.7 Millimeter
Bore	1.188 Inch   30.175 Millimeter
Nominal Bolt Circle Diameter Round	4.7 Inch   120 Millimeter
Bolt Spacing	3.25 Inch   82.55 Millimeter
Cartridge Pilot Depth	0 Inch   0 Millimeter
Cartridge Pilot Diameter	0 Inch   0 Millimeter
Housing material	Cast iron
D <sub>a</sub>	93.7 mm



## BEARING CORP.OF AMERICA

$D_{b1}$	76 mm
$D_{b2}$	84 mm
A	32.5 mm
$A_1$	13 mm
$A_3$	3.2 mm
$A_5$	22.5 mm
$B_1$	35.7 mm
N	11.5 mm
$s_1$	26.7 mm
$R_G$	1/4-28 UNF
$R_1$	21 mm
$D_N$	6.5 mm
$SW_N$	7 mm
$G_N$	1/4-28 SAE-LT
$J_6$	96 mm
$J_7$	24.5 mm
$N_4$	4 mm
Basic dynamic load rating C	19.5 kN
Basic static load rating $C_0$	11.2 kN
Fatigue load limit $P_u$	0.475 kN
Limiting speed	6300 r/min
Mass bearing unit	1.05 kg
Thread grub screw $G_2$	5/16-24 UNF
Hexagonal key size for grub screw N	3.969 mm
Recommended tightening torque for grub screw	6.5 N · m
Recommended diameter for attachment bolts, mm G	10 mm
Recommended diameter for attachment bolts, inch G	0.375 in